

CHATEAU CHAPARRAL

UNIT NO. 1

LOCATED IN

NW 1/4 OF THE SW 1/4 OF SEC. 13, T 15 S, R 78 W, 6TH P.M.

CHAFFEE COUNTY, COLORADO

WATER & SEWER SYSTEM

COMPONENTS

LEGEND

- DE DEAD END WATERLINE
- W--- PRESUMED WATERLINE
- |--- WATERLINE EXPOSED BY EXCAVATION
- o INDIVIDUAL WATER RISER W/ FAUCET
- VB VALVE BOX
- o 4" DIAMETER PLASTIC SEWER RISER
- >--- APPARENT DIRECTION OF SEWAGE FLOW
- |--- DEAD END ON SEWER
- o--- 6" DIAMETER PLASTIC SEWER MAIN
- o--- 4" DIAMETER PLASTIC SEWER MAIN
- S--- PRESUMED SEWER LATERAL
- CO SEWER CLEANOUT

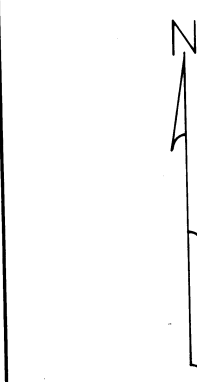
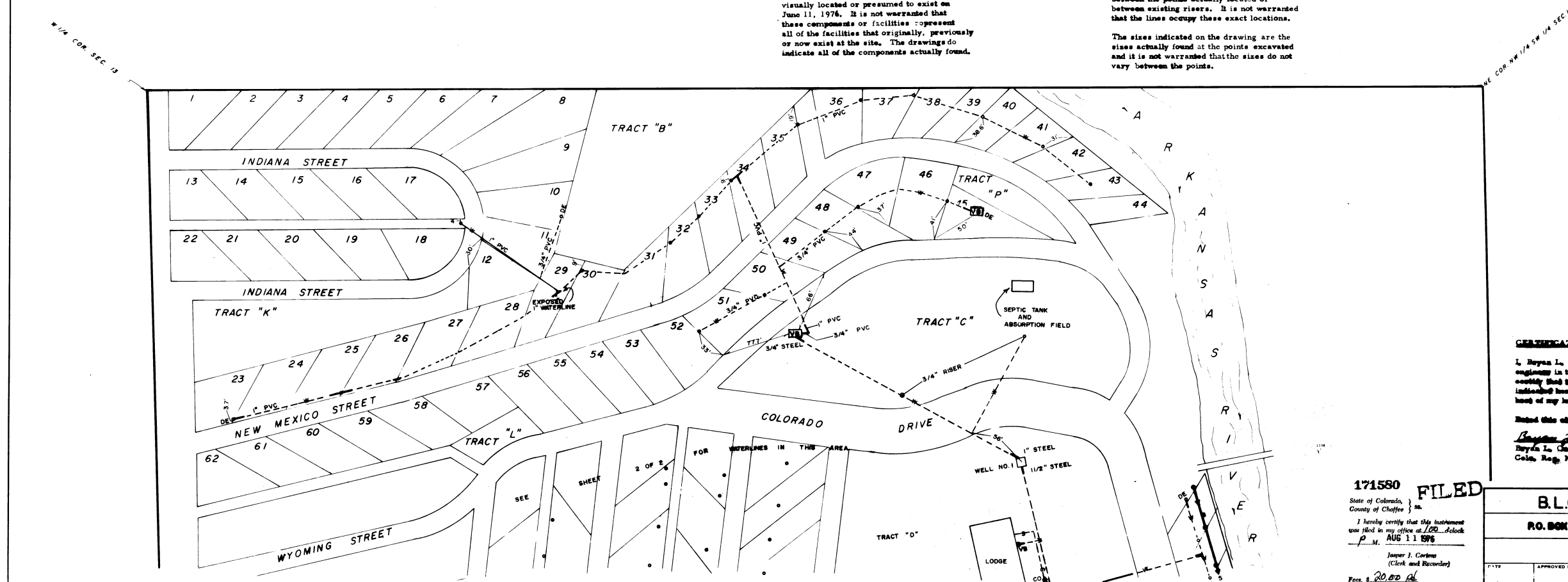
EXISTING SEWER SYSTEM - The visible components of the existing sewer system were located relative to lot and tract corners found at the site. These visible components are accurately shown on this drawing. Subsurface trunks and laterals have been located and sized as nearly as possible by utilizing exposed piping, riser connections, elbow flow directions at the riser base, and by consulting the contractor that installed the original system. It is not warranted that the trunks and laterals occupy these exact locations.

The sewer and water components shown on this drawing indicate those components visually located or presumed to exist on June 11, 1978. It is not warranted that these components or facilities represent all of the facilities that originally, previously or now exist at the site. The drawings do indicate all of the components actually found.

EXISTING WATER SUPPLY SYSTEM

The visible components of the existing water supply system were located relative to lot and tract corners found at the site. These visible components are accurately shown on this drawing. The subsurface mains and laterals have been located by actual exposure of the line. These actual locations are shown as heavy lines as indicated in the legend. The waterlines were presumed to run in straight lines between the points actually located or between existing risers. It is not warranted that the lines occupy these exact locations.

The sizes indicated on the drawing are the sizes actually found at the points excavated and it is not warranted that the sizes do not vary between the points.



CERTIFICATION
 I, Bryan L. Owen, a registered professional engineer in the State of Colorado, do hereby certify that the sewer and water components indicated herein are true and correct to the best of my knowledge.
 Dated this eleventh day of June, 1978.
 Bryan L. Owen, P. E.
 Colo. Reg. No. 7661



171580
 State of Colorado,
 County of Chaffee }
 I hereby certify that this instrument was filed in my office at 1:02... o'clock P. M. AUG 11 1978
 Jasper J. Corbin
 (Clerk and Recorder)
 Fee, \$ 20.00

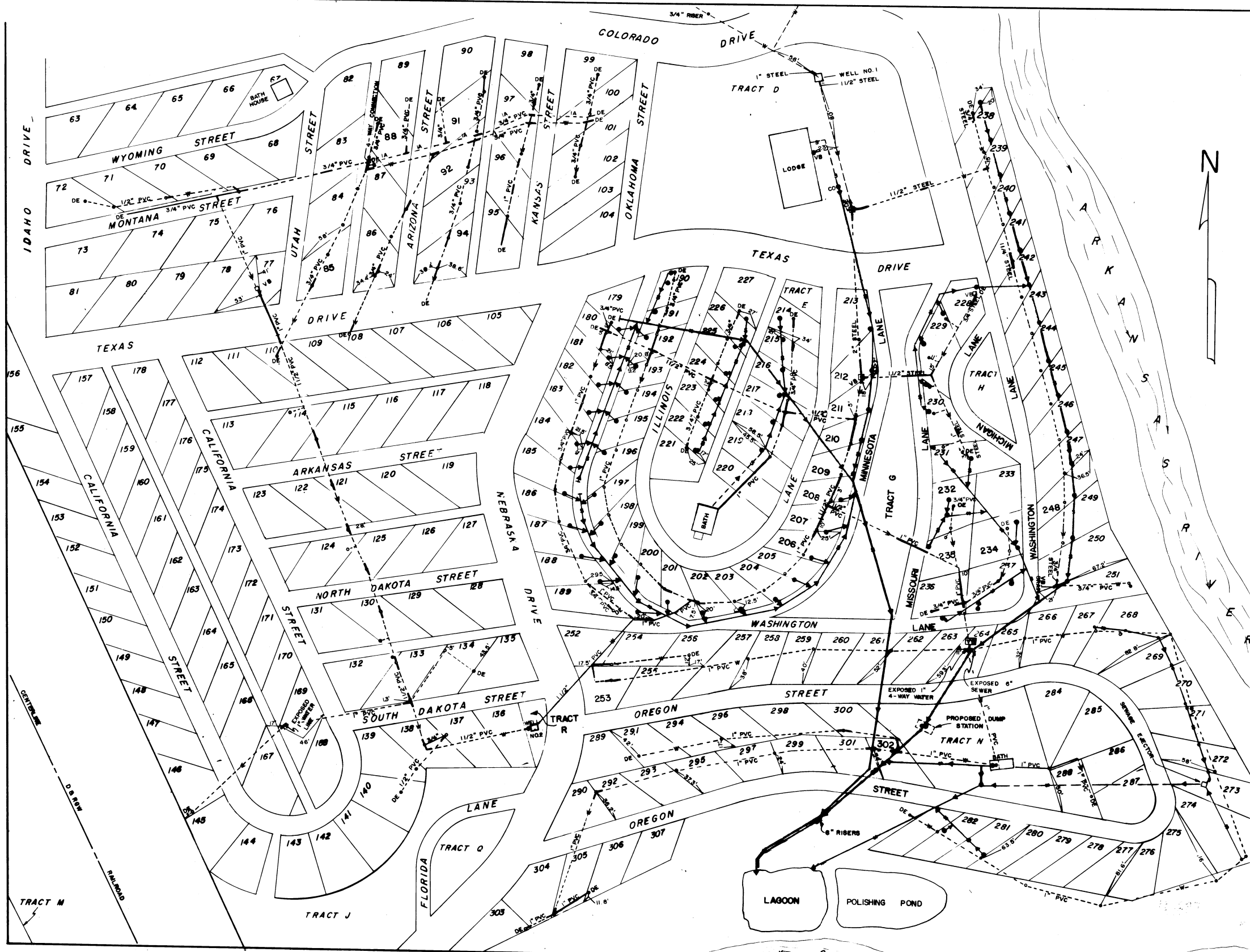
B.L.Q. ENGINEERING	
NO. BOX 992	SCALE DRAWN BY L.Q./MFP
SALIDA, COLORADO	
APPROVED BY	DRAWING NUMBER
8/11/78	SHEET 1 OF 2

DRAWING NUMBER

DRAWING NUMBER

DRAWING NUMBER
 CHATEAU CHAPARRAL
 UNIT NO. 1
 WATER & SEWER SYSTEM
 - 10 E 2 -

DRAWING NUMBER
 Sub 119



CHATEAU CHAPARRAL

UNIT NO. 1

LOCATED IN
NW 1/4 SW 1/4 S13, T15S, R78W, 6TH PM.
CHAFFEE COUNTY COLORADO

WATER & SEWER SYSTEM COMPONENTS

- LEGEND**
- IA INACTIVE WATERLINE
 - DE DEAD END WATERLINE
 - PRESUMED WATER LINE
 - WATERLINE EXPOSED BY EXCAVATION
 - o INDIVIDUAL WATER RISER W/ FAUCET
 - VB VALVE BOX
 - o 4" DIAMETER PLASTIC SEWER RISER
 - o APPARENT DIRECTION OF SEWAGE FLOW
 - DEAD END ON SEWER
 - 6" DIAMETER PLASTIC SEWER MAIN
 - 4" DIAMETER PLASTIC SEWER MAIN
 - PRESUMED SEWER LATERAL
 - CO SEWER CLEANOUT

EXISTING WATER SUPPLY SYSTEM - The visible components of the existing water supply system were located relative to lot and tract corners found at the site. These visible components are accurately shown on this drawing. The submain, mains and laterals have been located by actual exposure of the line. These actual locations are shown as heavy lines as indicated in the legend. The waterlines were presumed to run in straight lines between the points actually located or between existing risers. It is not warranted that the lines occupy these exact locations.

The sizes indicated on the drawing are the sizes actually found at the points excavated and it is not warranted that the sizes do not vary between the points.

EXISTING SEWER SYSTEM - The visible components of the existing sewer system were located relative to lot and tract corners found at the site. These visible components are accurately shown on this drawing. Submain, trunks and laterals have been located and sized as nearly as possible by utilizing exposed piping, riser connections, flow direction at the riser base, and by consulting the contractor that installed the original system. It is not warranted that the trunks and laterals occupy these exact locations.

The sewer and water components shown on this drawing indicate these components virtually located or presumed to exist on June 11, 1976. It is not warranted that these components or facilities represent all of the facilities that originally, previously or now exist at the site. The drawings do indicate all of the components actually found.

CERTIFICATION

I, Bryan L. Queen, a registered professional engineer in the State of Colorado, do hereby certify that the sewer and water components indicated hereon are true and accurate to the best of my knowledge.

Dated this eleventh day of June, 1976.

Bryan L. Queen
Bryan L. Queen, P. E.
Colo. Reg. No. 7661

PLANNING COMMISSION APPROVAL
APPROVED BY THE CHAFFEE COUNTY PLANNING COMMISSION,
THIS 28th DAY OF June, 1976.
By *Stanley R. Ogilvie*
CHAIRMAN

BOARD OF COUNTY COMMISSIONERS APPROVAL
APPROVED BY THE CHAFFEE COUNTY BOARD OF COMMISSIONERS
THIS 10th DAY OF August, 1976.
By *Robert J. Tuttle*
CHAIRMAN

171580
State of Colorado,
County of Chaffee }
I hereby certify that this instrument
was filed in my office at 10:00 o'clock
P.M. AUG 11 1976
Jasper J. Cortese
(Clerk and Recorder)
Page 2

COLORADO DEPARTMENT OF HEALTH APPROVAL
APPROVED BY THE COLORADO DEPARTMENT OF HEALTH
THIS 16th DAY OF JULY 1976.
By *Carol E. Bulham* Professional Engineer
DISTRICT ENGINEER

B.L.Q. ENGINEERING	
P.O. BOX 982	SCALE 1" = 80'
SALIDA, COLORADO	
DATE 6/11/76	DRAWING NUMBER SHEET 2 OF 2

DRAWING NUMBER CHATEAU CHAPARRAL UNIT NO. 1 WATER & SEWER SYSTEM 2-41