




Chateau Chapparral Owners Association – Lots For Sale - updated May 14, 2014

Photo	Lot #	Phone # email	Description	Price \$
 <p style="font-size: small; margin-top: 10px;">Lot #7 Indiana Shed has toilet in it Cement patio slab</p>	7	Don Terry 336.345.6025	Long thin house on Indiana St with kitchen, toilet and sleeping space. Large graveled lot with concrete patio.	30,000
	19	720.495.9639	Park Model on Indiana St, large addition, covered porch and bunkhouse on larger lot	62,500
	25	Century 21 Mal Sillars 719.395.8616	1984 Mayflower trailer on New Mexico St, large covered deck, 2 storage sheds (one with window, electricity)	45,000
	77	303.935.3692	Trailer on Utah St (at Texas St), graveled lot, 2 sheds	29,000
	99	Mal Sillars, Summit Rlty 719.395.8616 719.207.3000	1999 Fleetwood park model w/10X16 addition on Oklahoma St. Beautiful mountain views. Dishwasher, washer/dryer, evap cooler, full-size furnace, laminate floors in living/dining room, computer area. Winter water. 10X12 shed plus green house & tool shed. Graveled lot with stone patios, Covered gazebo.	89,000



Chateau Chapparral Owners Association – Lots For Sale - updated May 14, 2014

	<p>108</p>	<p>Felix 719.542.5611 fame36@com cast.net</p>	<p>Large lot and trailer on Texas St, 12x12 roofed deck, 2 small sheds, all utilities</p>	<p>24,000</p>
	<p>110</p>	<p>719.494.4505</p>	<p>Trailer with porch add-on (no sign on lot. Info from sign on lodge bulletin board)</p>	<p>25,000</p>
	<p>125</p>	<p>Gail Runkles 303.423.0433 cototopic@ya hoo.com See Wayne, lot 123 303.550.8578 to view</p>	<p>1983 Mayflower 8X 37 trailer on North Dakota St, 2 tip outs, winter water, new roof over trailer, new carpet throughout, full size, side by side refrigerator. New 20X 8 room addition, nicely finished, screened porch. 2 sheds included.</p>	<p>53,000</p>
	<p>At 148</p>	<p>719.650.6536</p>	<p>2005 Esquire camper on Ford body, 16K miles, 31 ft parked at lot 148 on California St. (camper only for sale, lot not listed for sale)</p>	<p>Not listed on sign</p>
	<p>153</p>	<p>Century 21 719.395.8616, Cherie Haarbarts 719.207.1745</p>	<p>Trailer with large addition & roof-over on California St.</p>	<p>Not listed on sign</p>

Chateau Chapparral Owners Association – Lots For Sale - updated May 14, 2014

	170	303.478.5911	Vacant lot on California, has winter water, no trailer	Not listed on sign
	197	719.650.6536	Coachman 5 th Wheel trailer on Illinois St with shed and “pull through” lot.	Not listed on sign
	226	303.783.1482 Mark or Jo	Wilderness Trailer on Illinois St., on graveled lot with 2 sheds	15,000
	258	303-989-5522 DalSassoRealty@yahoo.com	1983 Shasta 5 th wheel, 33 ft. on Oregon St, sleeps 6, skirted	17,900

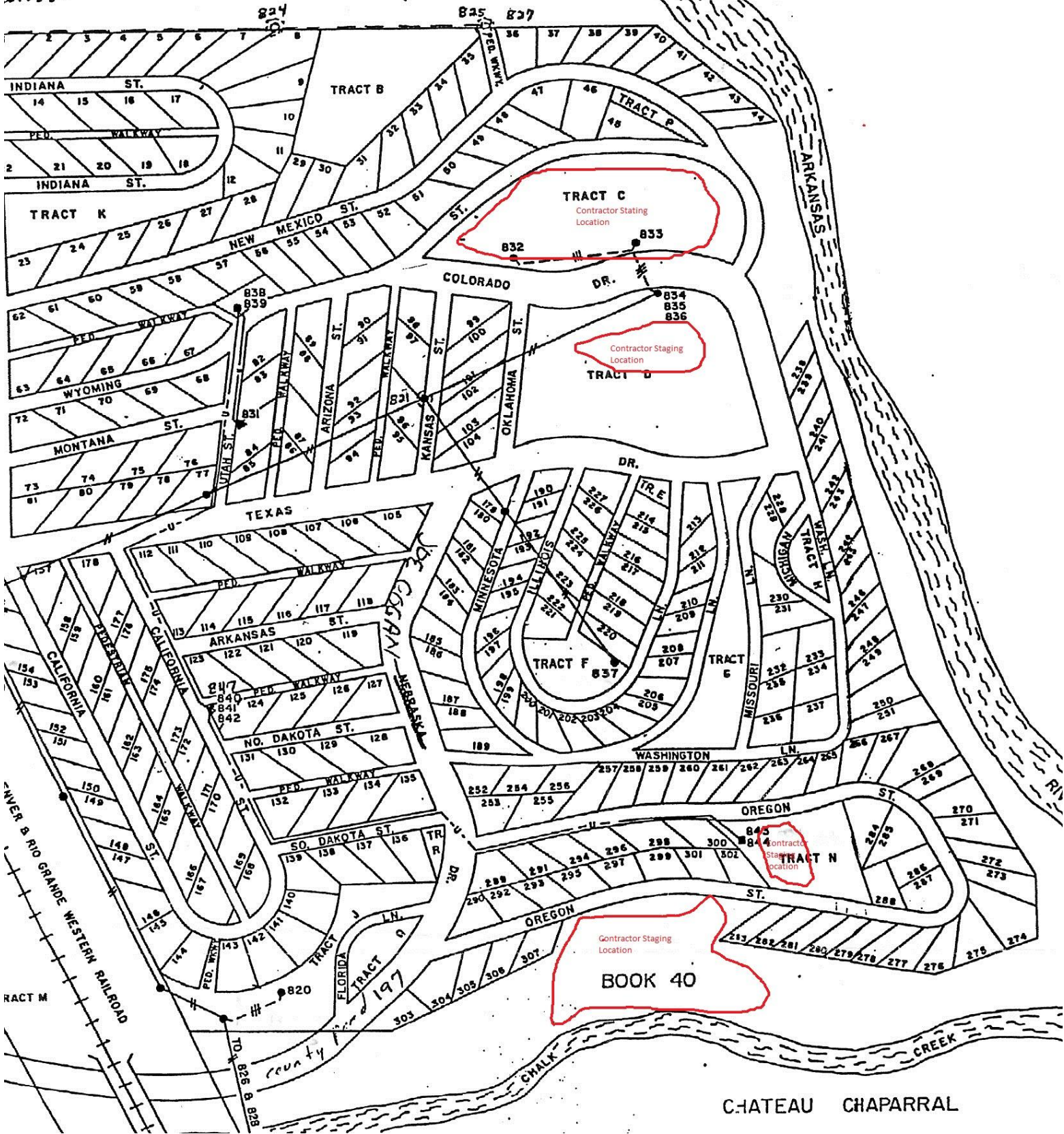
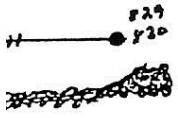
Chateau Chapparral Owners Association – Lots For Sale - updated May 14, 2014

	261	719.207.1745, 719.395.9063 Remax Cherie Haarberg	graveled, landscaped lot with patio & rock wall on Oregon St. (trailer on lot not included), flier	20,000
	288	720.319.3664, 720.748.6061	5 th Wheel with slideout, sheds on gravel lot on Oregon St.	Not listed on sign

This list is maintained by a volunteer owner who drives around CCOA every few months, looking for new lots posted for sale & noting where for sale signs have been removed. It is not maintained or provided by the Association and is not “official”. This information limited to whatever is on the sign posted at the lot, or was posted on lodge bulletin board. It may not be current or accurate.

To add, delete or update information on this list, please email information to brendabronsonfpe@gmail.com and she will update it next time she revises the list.

Chateau Chapparral Owners Association – Lots For Sale - updated May 14, 2014



CHATEAU CHAPPARRAL